



uVision™ 365 SERIES

NDT Inspection Lamps

The uVision™ 365 Series is Spectroline's innovative line of compact, broad-beam, handheld NDT lamps.

These lightweight, yet rugged lamps boast an IP65 rating, making them dust-tight and water-resistant. Using a state-of-the-art heat sink, the uVision™ is mechanically cooled without the need for fans. In addition to the three powerful UV-A (365 nm) LEDs, it has a convenient white light LED for illuminating work areas.

Compliant versions have embedded microprocessors to keep lamps within specifications. There are multiple power-source options as well.

NEW!

INTRODUCING THE **Z-MODEL**

with In-Handle
Lithium-Ion Battery



**COMPLIANT
MODELS
AVAILABLE**



**MEETS
EN ISO 3059
SPECIFICATIONS**



**DUST-TIGHT &
WATER RESISTANT**



**WIDE, EVEN
BEAM PROFILE**



**FANLESS &
COOL RUNNING**



**BASE
IN-LINE
A/C CORD**



**M-MODEL
EXTERNAL
BATTERY PACK**



NEW!
**Z-MODEL
IN-HANDLE
BATTERY**



**R-MODEL
REEL WITH
50-FOOT CORD**

NEW!

INTRODUCING THE Z-MODEL

RUGGED. RELIABLE. CORDLESS.



BASE MODEL

Lamp with in-line AC power supply, UV-absorbing spectacles, comes in a protective case.

uVision™ 365:
UV-365EH or UV-365ES
uVision™ 365 DELUXE:
UV-365SBLC or UV-365HC



NEW!

Z-MODEL

Lamp with in-handle lithium battery, in-line AC charger and cord, UV-absorbing spectacles, comes in a protective case.

uVision™ 365:
UV-365ZEH
uVision™ 365 DELUXE:
UV-365ZSBLC or UV-365ZHC



M-MODEL

Lamp with battery pack with 12V rechargeable NiMH battery, in-line AC power supply, UV-absorbing spectacles, comes in a protective case.

uVision™ 365:
UV-365MEH
uVision™ 365 DELUXE:
UV-365MSBLC or UV-365MHC



R-MODEL

Lamp on a reel with 50 ft retracting A/C power cord, hooks to suspend from ceiling, UV-absorbing spectacles.

uVision™ 365 DELUXE:
UV-365SBLCR or UV-365HCR



3 UV-A LEDs
For wide area of coverage

LONG-LASTING UV-A LENSES
Reduce the rate of solarization

Faceplate with INTEGRAL UV-A PASS FILTERS
Reduce visible wavelengths (SBLC- & HC-Models only)

SEALED CONTROL SWITCH
Grip-mounted, three-way rocker switch (white light/off/UV)

POWER/BATTERY LIFE LIGHT
Indicates power level

THERMAL CUT-OFF CIRCUITRY

Prevents lamp from going out of compliance when internal temperature exceeds specifications (SBLC-Models only)

FANLESS DESIGN

Maintains optimum lamp temperature using state-of-the-art heat sinks

PISTOL GRIP

Comfortable, balanced control

NEW!

IN-HANDLE LITHIUM ION BATTERY

(Z-Models only)
Available in multiple power sources

ADJUSTABLE WHITE LIGHT LED
Use to locate surface flaws



BACK VIEW

	UV-365SBLC*	UV-365HC	UV-365ZHC	UV-365ES	UV-365EH	UV-365ZEH
TESTED TO COMPLY WITH Rolls-Royce RRES 90061 REQUIREMENTS	✓	✗	✗	✗	✗	✗
TESTED TO COMPLY WITH ASTM E3022-18 STANDARD	✓	✓	✓	✗	✗	✗
MEETS SPECIFICATIONS EN ISO 3059	✓	✓	✓	✓	✓	✓
Nominal Steady-State UV-A Intensity at 15 in (38 cm) Ø	< 5,000 µW/cm²	6,000 µW/cm²	8,000 µW/cm²	< 5,000 µW/cm²	7,000 µW/cm²	9,000 µW/cm²
UV-A Coverage Area at 15 in (38 cm) at minimum 1,200 µW/cm²	6 in (15.2 cm) Diameter	6.4 in (16.3 cm) Diameter	7.5 in (19 cm) Diameter	6 in (15.2 cm) Diameter	7 in (17.8 cm) Diameter	7 in (17.8 cm) Diameter
Filter/Faceplate	Integral UV-A pass filters			Standard faceplate		Clear filter
Thermal Cut-Off Circuitry	✓	✗	✓	✗		
Visible Light Measurement	< 1 foot-candles (11 lux)			< 2 foot-candles (22 lux)		
In-Handle Lithium-Ion Battery	UV-365ZSBLC	✗	✓	✗	✗	✓
External Battery Pack	UV-365MSBLC	UV-365MHC	✗	✗	UV-365MEH	✗
Reel Kit (50 ft power cord)	UV-365SBLCR	UV-365HCR	✗	✗	✗	✗

*These versions are adjusted to ensure that they provide a maximum steady-state UV-A intensity of less than 5,000 µW/cm² at 15 in (38 cm) Ø UV-A intensity reading taken with the Spectroline® AccuMAX™ Series meter, and is factory set to the value shown. Each lamp is fitted with an 8-foot cord and the appropriate plug for the country of destination. An optional 20-foot cord is available. The "/20" suffix denotes the 20-foot power cord options.



Light Source:	(3) UV-A LEDs, (1) white light LED
Lamp Style:	Pistol grip
Lamp Head Diameter:	3.5 in (9 cm)
Height:	7.5 in (19 cm) Z-Model: 9.5 in (24.1 cm)
Width:	3.5 in (8.9 cm) Z-Model: 3.75 in (9.5 cm)
Weight:	1.9 lb (0.90 kg) Z-Model: 2.65 lb (1.2 kg)
White Light LED Intensity:	400 foot-candles (4,306 lux)
Power Requirements:	100-120VAC / 12VDC*

In-Handle Lithium Ion Battery: Z-Model Only	Type: 14.8V, Lithium ion (rechargeable) Run time: ZSBLC: 10 hours ZHC: 7 hours ZEH: 8 hours Charge time: 4 hours
External Battery Pack: M-Model Only	Type: 12V, NiMH (rechargeable) Run time: 3.5 hours continuous Charge time: 2 hours

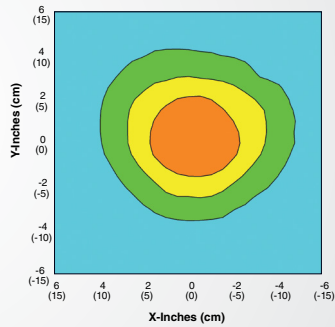
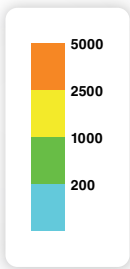
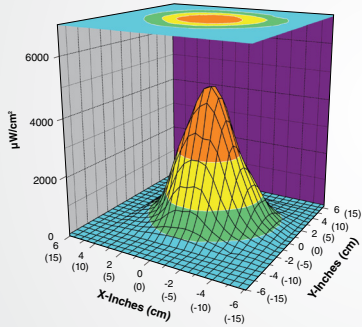
**(Also available in 220-240V versions)*

STANDARD-INTENSITY MODELS:

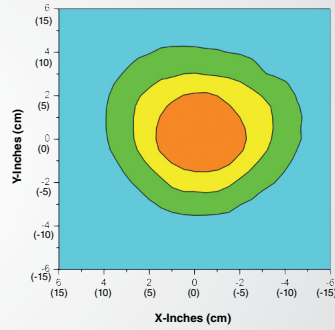
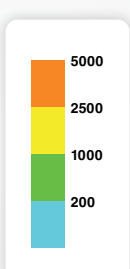
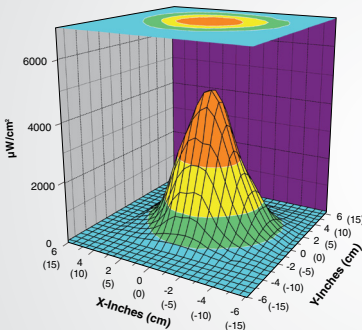
Surface Contour Profile at 15 in (38 cm)

Top Intensity Profile at 15 in (38 cm)

UV-365SBLC MODELS



UV-365ES MODELS

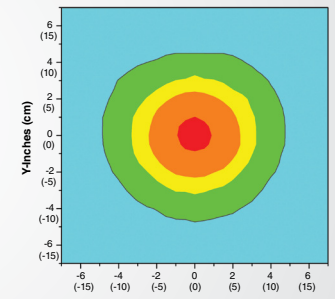
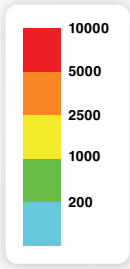
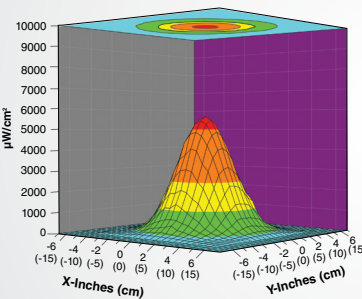


HIGH-INTENSITY MODELS:

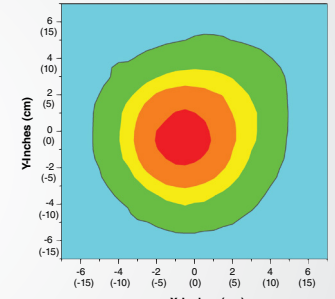
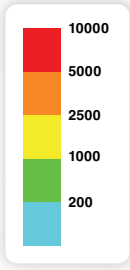
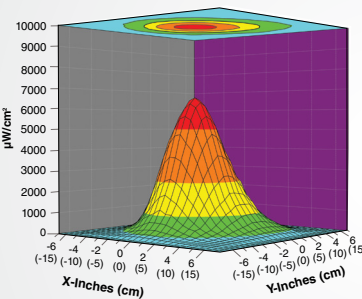
Surface Contour Profile at 15 in (38 cm)

Top Intensity Profile at 15 in (38 cm)

UV-365HC MODELS



UV-365EH MODELS



APPROPRIATE DOCUMENTS PROVIDED WITH EACH LAMP

