

# REL

Glo-Black LED  
UV-A Lamps

Distributed by:  
800-900-9097



[www.ndtunlimited.com](http://www.ndtunlimited.com)  
[info@ndtunlimited.com](mailto:info@ndtunlimited.com)



Tested & Complies with



**ASTM E3022**  
STANDARD

Tested & Complies with

**Rolls-Royce**  
**RRES 90061**  
REQUIREMENTS

Meets Specifications



**ISO 3059**



2021

[relinc.com](http://relinc.com)



Glo-Black LED  
UV-A Lamps

	C4 Magnum.....	5		Liquid Magnum.....	19
	C4 Magnum-GO.....	9		Profusion.....	25
	C4 Nomad.....	12		Profusion XW.....	30
	C4 Nomad-GO.....	16		REL Star Testing Panel.....	35







Tough.



REL

Made in  
  
U.S. of eh!

relinc.com





# LED UV-A Lamps



[relinc.com](http://relinc.com)



# C4 Magnum

## LED UV-A Lamp

Tested & Complies with



**ASTM E3022**  
STANDARD

Tested & Complies with  
**Rolls-Royce**  
**RRES 90061**  
REQUIREMENTS

Meets Specifications



**ISO 3059**

NSN: 5980-01-671-7903





# C4 Magnum

LED UV-A Lamp

//// 2-Year Warranty ////

## 3 ways to buy the C4 Magnum



### = UV-2000

- Glo-Black C4 Magnum LED UV-A Lamp
- 120/240V, 60W Power Supply (UV-2023)
- Bolt on Power Cord for Magnum (UV-2014)
- Rugged watertight case
- Safety glasses



### = UV-2000NC

- Glo-Black C4 Magnum LED UV-A Lamp
- 120/240V, 60W Power Supply (UV-2023)
- Bolt on Power Cord for Magnum (UV-2014)
- Safety glasses



### = UV-2000CR

- Glo-Black C4 Magnum LED UV-A Lamp
- 30' Retractable Cord Reel w/ Power Supply (UV-5309)
- Safety glasses

## C4 Magnum LED attributes:

- Serialized Certificate of Conformance
- Tested & complies with Rolls-Royce RRES 90061 Requirements
- Tested & complies with ASTM E3022 Standard
- Meets specifications ISO 3059
- Input voltage 100-240V AC
- Tested to work as hard as you do
- Refurbishable
- IP-67 Rated

## Directions For Use:

1. Remove from impact resistant carrying case.
2. Drop
3. Kick
4. Use

\*Note: Steps 2-4 can be performed in any order!





## C4 Magnum LED UV-A Characteristics

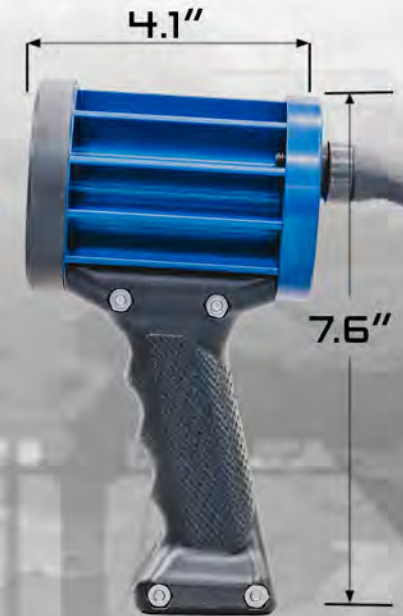
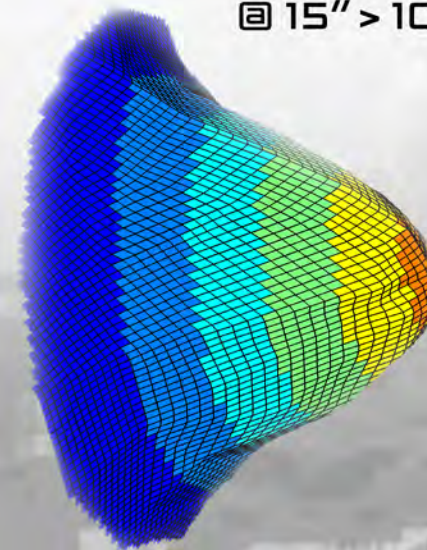
Performance Attributes	Parameters
Maximum Irradiance (at 15 in/38cm)	5000 $\mu\text{W}/\text{cm}^2$
Peak Wavelength	365 $\pm$ 5 nm
Irradiance at Peak Wavelength (at 15 in)	> 200 $\mu\text{W}/\text{cm}^2$
Typical Irradiated Area (profile at 15 in)	Circular Spot 10" Diameter > 1000 $\mu\text{W}/\text{cm}^2$ (347-382nm)
Emission Spectrum	
Full Width at Half Maximum (FWHM)	$\leq$ 15 nm
Longest Wavelength at Half Max (LWHM)	$\leq$ 380 nm
Full width at 10% Maximum	$\leq$ 30 nm ( $\pm$ 15)
Excitation Irradiance (347-382 nm)	> 2500 $\mu\text{W}/\text{cm}^2$
Wavelength Drift (at 70° F ambient)	$\leq$ 3 nm
Working Distances	
ASTM E3022	Minimum WD $\leq$ 5 in
RRES 90061	Minimum WD = 15 in
	Maximum WD = 36 in
Typical Visible Emission	
ASTM E3022 range (400-760 nm)	$\leq$ 2 ft candles
RRES 90061 range (390-800 nm)	$\leq$ 20 lux at 15 in
	$\leq$ 5 lux at 36 in

Physical Attributes	Parameters
Operating Environment	32 - 120° F
Maximum Housing Temperature (at 70° F ambient)	116° F *
Lamp Cord Length	10 ft (Standard) or 30 ft (Cord Reel)
Power Supply Cord Length	6 ft
Weight	1.7 lb
Power in	100-240V AC / 50 - 60Hz < 1.2A
Specification Compliance	ASTM E3022, RRES 90061, ISO 3059

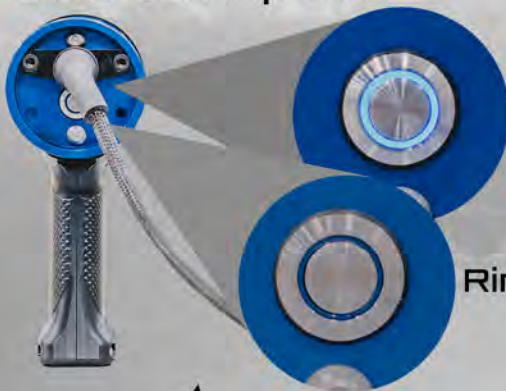
\*Emission Spectrum measured at Stabilization Temperature

**10" diameter  
spot size**

**@ 15" > 1000  $\mu\text{W}/\text{cm}^2$**



**2 switch inputs**



Ring ON = UV-A OFF

Ring OFF = UV-A ON



**relinc.com**

# Accessories for C4 Magnum & C4 Magnum-GO



Domer &  
Ding Ring  
UV-2016

Mounting Arm  
UV-1100

Bench  
Adapter  
UV-1000

Power Supply  
UV-2023

Spray Can  
Fixture  
UV-7000



Bolt on Power Cord for Magnum (UV-2014)  
& Magnum-GO (UV-2015)

Cord Reel for Magnum (UV-5309)  
& Magnum-GO (UV-5310)





# C4 Magnum-GO

LED UV-A Lamp  
+ White Light

Tested & Complies with



**ASTM E3022**  
STANDARD

Tested & Complies with

**Rolls-Royce**  
**RRES 90061**  
REQUIREMENTS

Meets Specifications



**ISO 3059**



[relinc.com](http://relinc.com)



# C4 Magnum-GO

LED UV-A Lamp

//// 2-Year Warranty ////

## 3 ways to buy the C4 Magnum-GO



### = UV-3000

- Glo-Black C4 Magnum-GO LED UV-A Lamp
- 120/240V, 60W Power Supply (UV-2023)
- Bolt on Power Cord for Magnum-GO (UV-2015)
- Rugged watertight case
- Safety glasses



### = UV-3000NC

- Glo-Black C4 Magnum-GO LED UV-A Lamp
- 120/240V, 60W Power Supply (UV-2023)
- Bolt on Power Cord for Magnum-GO (UV-2015)
- Safety glasses



### = UV-3000CR

- Glo-Black C4 Magnum-GO LED UV-A Lamp
- 30' Retractable Cord Reel w/ Power Supply (UV-5310)
- Safety glasses

## C4 Magnum-GO LED attributes:

- Serialized Certificate of Conformance
- Tested & complies with Rolls-Royce RRES 90061 Requirements
- Tested & complies with ASTM E3022 Standard
- Meets Specification ISO 3059
- Input voltage 100-240V AC
- Tested to work as hard as you do
- Refurbishable
- IP-67 Rated

## Directions For Use:

1. Remove from impact resistant carrying case.
2. Drop
3. Kick
4. Use

\*Note: Steps 2-4 can be performed in any order!





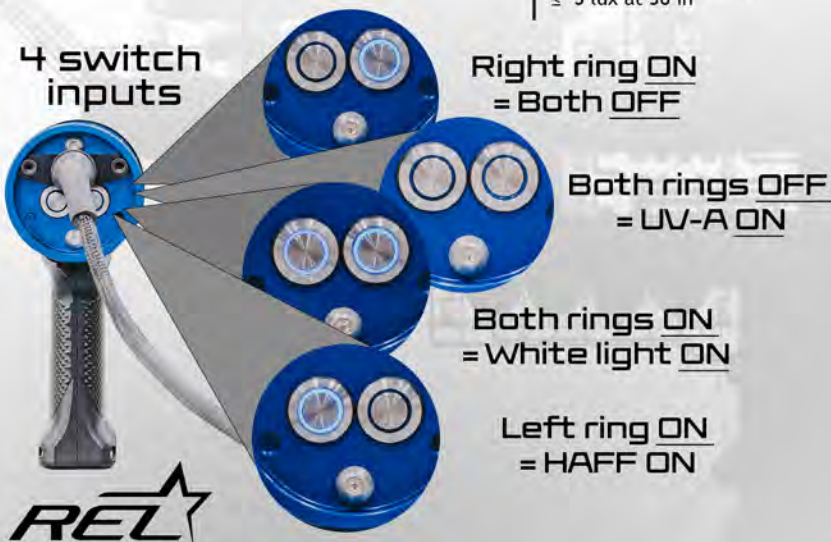
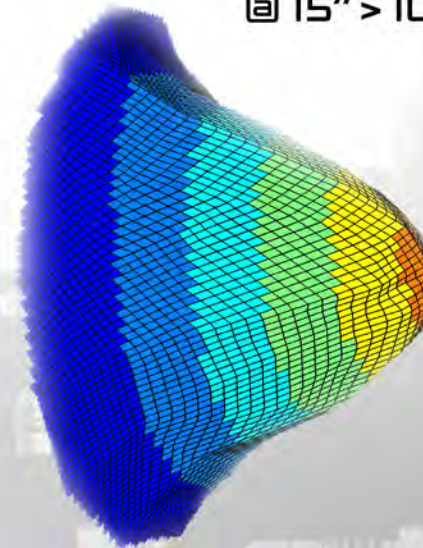
## C4 Magnum-GO LED UV-A Characteristics

Performance Attributes	Parameters
Maximum Irradiance (at 15 in/38cm)	5000 $\mu\text{W}/\text{cm}^2$
Peak Wavelength	365 $\pm$ 5 nm
Irradiance at Peak Wavelength (at 15 in)	> 200 $\mu\text{W}/\text{cm}^2$
Typical Irradiated Area (profile at 15 in)	Circular Spot 10" Diameter > 1000 $\mu\text{W}/\text{cm}^2$ (347-382nm)
Emission Spectrum	
Full Width at Half Maximum (FWHM)	$\leq$ 15 nm
Longest Wavelength at Half Max (LWHM)	$\leq$ 380 nm
Full width at 10% Maximum	$\leq$ 30 nm ( $\pm$ 15)
Excitation Irradiance (347-382 nm)	> 2500 $\mu\text{W}/\text{cm}^2$
Wavelength Drift (at 70° F ambient)	$\leq$ 3 nm
Working Distances	
ASTM E3022	Minimum WD $\leq$ 5 in
RRES 90061	Minimum WD = 15 in
	Maximum WD = 36 in
Typical Visible Emission	
ASTM E3022 range (400-760 nm)	$\leq$ 2 ft candles
RRES 90061 range (390-800 nm)	$\leq$ 20 lux at 15 in
	$\leq$ 5 lux at 36 in

Physical Attributes	Parameters
Operating Environment	32 - 120° F
Maximum Housing Temperature (at 70° F ambient)	116° F *
Lamp Cord Length	10 ft (Standard) or 30 ft (Cord Reel)
Power Supply Cord Length	6 ft
Weight	1.7 lb
Power in	100-240V AC / 50 - 60Hz < 1.2A
Specification Compliance	ASTM E3022, RRES 90061, ISO 3059

\*Emission Spectrum measured at Stabilization Temperature

**10" diameter  
spot size  
@ 15" > 1000  $\mu\text{W}/\text{cm}^2$**



**relinc.com**





# C4 Nomad

## LED UV-A Lamp

**POWERED BY**  
**M18 REDLITHIUM**



Tested & Complies with



**ASTM E3022**  
STANDARD

Tested & Complies with

**Rolls-Royce**  
**RRES 90061**  
REQUIREMENTS

Meets Specifications



**ISO 3059**





# C4 Nomad

LED UV-A Lamp

//// 2-Year Warranty ////

## 2 ways to buy the C4 Nomad



### =UV-2400

- Glo-Black C4 Nomad LED UV-A Lamp
- Rugged watertight case
- Two M18 2-Amp hour batteries
- 120V charger
- Safety glasses



### =UV-2400BT

- Glo-Black C4 Nomad LED UV-A Lamp (Lamp only)
- Safety glasses

### C4 Nomad LED attributes:

- Serialized Certificate of Conformance
- Tested & complies with Rolls-Royce RRES 90061 Requirements
- Tested & complies with ASTM E3022 Standard
- Meets Specifications ISO 3059
- Tested to work as hard as you do
- Refurbishable

### Directions For Use:

1. Remove from impact resistant carrying case.
2. Drop
3. Kick
4. Use

\*Note: Steps 2-4 can be performed in any order!





## C4 Nomad LED UV-A Characteristics

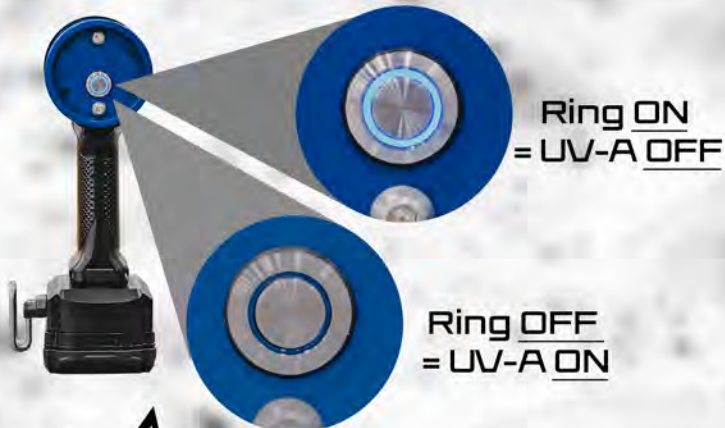
Performance Attributes	Parameters
Maximum Irradiance (at 15 in/38cm)	5000 $\mu\text{W}/\text{cm}^2$
Peak Wavelength	365 $\pm$ 5 nm
Irradiance at Peak Wavelength (at 15 in)	> 200 $\mu\text{W}/\text{cm}^2$
Typical Irradiated Area (profile at 15 in)	Circular Spot 10" Diameter > 1000 $\mu\text{W}/\text{cm}^2$ (347-382nm)
Emission Spectrum	
Full Width at Half Maximum (FWHM)	$\leq$ 15 nm
Longest Wavelength at Half Max (LWHM)	$\leq$ 380 nm
Full width at 10% Maximum	$\leq$ 30 nm
Excitation Irradiance (347-382 nm)	> 2500 $\mu\text{W}/\text{cm}^2$
Wavelength Drift (at 70° F ambient)	$\leq$ 3 nm
Working Distances	
ASTM E3022	Minimum WD $\leq$ 5 in
RRES 90061	Minimum WD = 15 in
	Maximum WD = 36 in
Typical Visible Emission	
ASTM E3022 range (400-760 nm)	$\leq$ 2 ft candles
RRES 90061 range (390-800 nm)	$\leq$ 20 lux at 15 in
	$\leq$ 5 lux at 36 in

Physical Attributes	Parameters
Operating Environment	32 - 120 °F
Maximum Housing Temperature (at 70° F ambient)	116 °F *
Lamp Cord Length	None
Power Supply	18 V Lithium Ion Battery
Weight	3.2 lb
Approximate run time/per battery	2.5 hrs
Specification Compliance	ASTM E3022, RRES 90061, ISO 3059

\*Emission Spectrum measured at Stabilization Temperature



2 switch inputs





# Accessories for C4 Nomad & C4 Nomad-GO



Domer &  
Ding Ring  
UV-2016



Spray Can  
Fixture  
UV-7000



120 volt M18 Battery Charger  
470-00007

M18 Battery,  
2.0 amp hour  
470-00008







# C4 Nomad-GO

LED UV-A Lamp  
+ White Light

**POWERED BY**  
**M18 REDLITHIUM**



Tested & Complies with



**ASTM E3022**  
STANDARD

Tested & Complies with



**RRES 90061**

REQUIREMENTS

Meets Specifications



**ISO 3059**



[relin.com](http://relin.com)



# C4 Nomad-GO

LED UV-A Lamp

//// 2-Year Warranty ////

## 2 ways to buy the Nomad-GO



### =UV-3400

- Glo-Black C4 Nomad-GO LED UV-A Lamp
- Rugged watertight case
- Two M18 2-Amp hour batteries
- 120V charger
- Safety glasses



### =UV-3400BT

- Glo-Black C4 Nomad-GO LED UV-A Lamp (Lamp only)
- Safety glasses



### C4 Nomad-GO LED attributes:

- Serialized Certificate of Conformance
- Tested & complies with Rolls-Royce RRES 90061 Requirements
- Tested & complies with ASTM E3022 Standard
- Meets specifications of ISO 3059
- Tested to work as hard as you do
- Refurbishable

### Directions For Use:

1. Remove from impact resistant carrying case.
2. Drop
3. Kick
4. Use

\*Note: Steps 2-4 can be performed in any order!



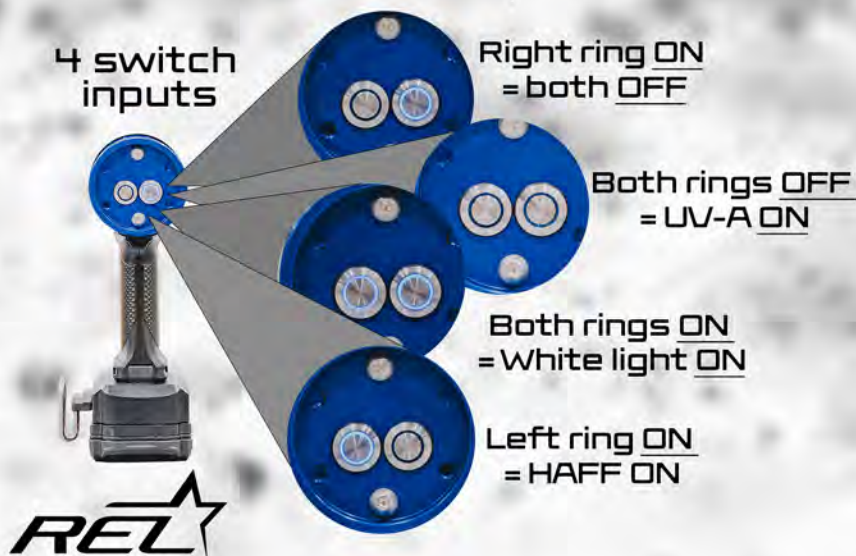


## C4 Nomad-GO LED UV-A Characteristics

Performance Attributes	Parameters
Maximum Irradiance (at 15 in/38cm)	5000 $\mu\text{W}/\text{cm}^2$
Peak Wavelength	365 $\pm$ 5 nm
Irradiance at Peak Wavelength (at 15 in)	> 200 $\mu\text{W}/\text{cm}^2$
Typical Irradiated Area (profile at 15 in)	Circular Spot 10" Diameter > 1000 $\mu\text{W}/\text{cm}^2$ (347-382nm)
Emission Spectrum	
Full Width at Half Maximum (FWHM)	$\leq$ 15 nm
Longest Wavelength at Half Max (LWHM)	$\leq$ 380 nm
Full width at 10% Maximum	$\leq$ 30 nm
Excitation Irradiance (347-382 nm)	> 2500 $\mu\text{W}/\text{cm}^2$
Wavelength Drift (at 70° F ambient)	$\leq$ 3 nm
Working Distances	
ASTM E3022	Minimum WD $\leq$ 5 in
RRES 90061	Minimum WD = 15 in Maximum WD = 36 in
Typical Visible Emission	
ASTM E3022 range (400-760 nm)	$\leq$ 2 ft candles
RRES 90061 range (390-800 nm)	$\leq$ 20 lux at 15 in $\leq$ 5 lux at 36 in

Physical Attributes	Parameters
Operating Environment	32 - 120 °F
Maximum Housing Temperature (at 70° F ambient)	116 °F *
Lamp Cord Length	None
Power Supply	18 V Lithium Ion Battery
Weight	3.2 lb
Approximate run time/per battery	2.5 hrs
Specification Compliance	ASTM E3022, RRES 90061, ISO 3059

\*Emission Spectrum measured at Stabilization Temperature





# Liquid Magnum

## LED UV-A Lamp

Tested & Complies with  
**Rolls-Royce**  
**RRES 90061**  
REQUIREMENTS

Meets Specifications



**ISO 3059**



[relinc.com](http://relinc.com)



# Liquid Magnum

LED UV-A Lamp

//// 2-Year Warranty ////



## =UV-2100

- Glo-Black Liquid Magnum LED UV-A Lamp
- 2-Meter Light Guide (UV-2120)
- 120/240V, 60W Power Supply (UV-2023)
- Bolt on Power Cord for Magnum (UV-2014)
- Swivel mount (UV-4010)
- Rugged watertight case
- Safety glasses

## Liquid Magnum LED attributes:

- Serialized Certificate of Conformance
- Tested & complies with Rolls-Royce RRES 90061 Requirements
- Meets Specifications ISO 3059
- Input voltage 100-240V AC
- Tested to work as hard as you do
- Refurbishable
- IP-67 Rated

## Directions For Use:

1. Remove from impact resistant carrying case.
2. Drop
3. Kick
4. Use

\*Note: Steps 2-4 can be performed in any order!





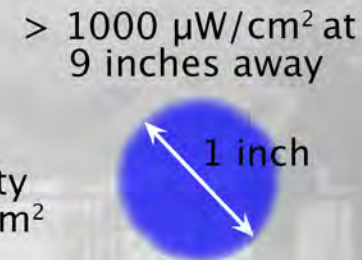
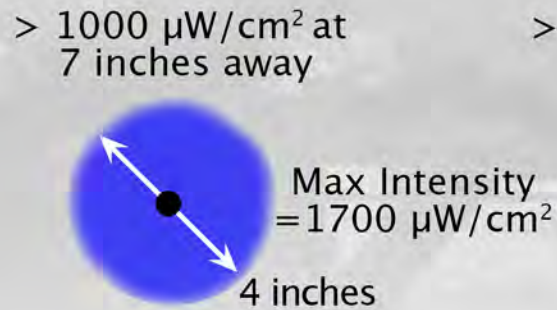
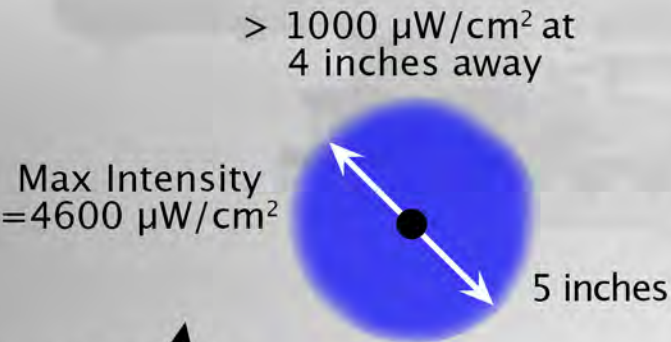
## Liquid Magnum LED UV-A Characteristics

Performance Attributes	Parameters
Peak Wavelength	365 ± 5nm
Emission Spectrum	
Full Width at Half Maximum (FWHM)	≤ 15 nm
Longest Wavelength at Half Max (LWHM)	≤ 380 nm
Full Width at 10% Maximum	≤ 30 nm
Wavelength Drift (at 70° ambient)	≤ 3 nm
Typical Visible Emission Liquid Magnum	
(390 nm - 800 nm)	≤ 20 Lux

1200  $\mu\text{W}/\text{cm}^2$  at 8 inches  
 4 inch diameter above 1000  $\mu\text{W}/\text{cm}^2$   
 7 inch diameter over 500  $\mu\text{W}/\text{cm}^2$

@ 4 inch distance white light is less than 2 foot candles  
 @ 4 inch distance there is a 5 inch diameter above 1000  $\mu\text{W}/\text{cm}^2$   
 @ 4 inch distance the maximum intensity is 4600  $\mu\text{W}/\text{cm}^2$   
 @ 7 inch distance white light is less than 1 foot candles  
 @ 7 inch distance there is a 4 inch diameter above 1000  $\mu\text{W}/\text{cm}^2$   
 @ 7 inch distance the maximum intensity is 1700  $\mu\text{W}/\text{cm}^2$

@ 9 inch distance white light is less than 1 foot candles  
 @ 9 inch distance there is a 1 inch diameter above 1000  $\mu\text{W}/\text{cm}^2$



Physical Attributes	Parameters
Operating Environment	32 - 120 °F
Maximum Housing Temperature (at 70° F ambient)	122 °F *
Lamp Cord Length	10 ft (Standard) or 50 ft (Maximum)
Power Supply Cord Length	≈ 6 ft
Weight	1.8 lb
Power in	100-240V AC / 50 - 60Hz < 1.2A
Specification Compliance	ISO 3059, RRES 90061

\* Emission Spectrum measured at Stabilization Temperature

### 2 switch inputs



Ring ON =  
 UV-A OFF



Ring OFF =  
 UV-A ON





# Accessories for Liquid Magnum

Mounting Arm  
UV-1100



Power Supply  
UV-2023



Bolt on Power Cord  
for Magnum (UV-2014)

2-Meter  
Light Guide  
UV-2120



Swivel Mount  
UV-4010



Liquid Nomad  
UV-2200





"REL, Inc. is an authorized Original Design Manufacturer (ODM) distributor of MILWAUKEE ELECTRIC TOOL CORPORATION."

## Lamp Packaging



C4 Nomad  
UV-2400



C4 Nomad-GO  
UV-3400



UV-2000 Magnum  
UV-3000 Magnum-GO



UV-2400 Nomad  
UV-3400 Nomad-GO



120V Charger



2-Amp Hour batteries  
included in package



UV-2100 Liquid Magnum



UV-2200 Liquid Nomad





## Corded Lamps



C4 Magnum  
UV-2000

NSN: 5980-01-671-7903



C4 Magnum-GO  
UV-3000

Liquid Magnum  
UV-2100



Profusion  
UV-4000  
[UV-4000DB shown]

## Overhead Lamps



Profusion XW  
UV-4700

C4 Nomad  
UV-2400



## Battery Powered Lamps



C4 Nomad-GO  
UV-3400



LED UV-A Lamps



# Profusion

## LED UV-A Lamp Module

UV-4000DB Shown

Tested & Complies with



**ASTM E3022**  
STANDARD

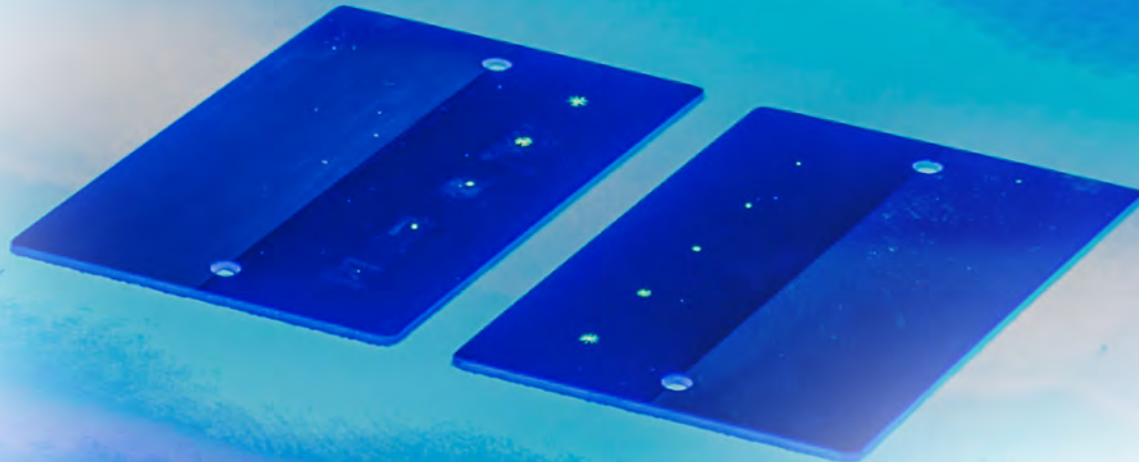
Tested & Complies with

**Rolls-Royce**  
**RRES 90061**  
REQUIREMENTS

Meets Specifications



**ISO 3059**



[relinc.com](http://relinc.com)



# Profusion LED UV-A Lamp

////// 2-Year Warranty ////

Hardware Hanging Kit UV-4015



Profusion Triple Bank [3 lamp module] UV-4000TB

Profusion Single Lamp Module UV-4000



### = UV-4000 includes:

- Glo-Black Profusion LED UV-A Lamp Module
- 120/240V Power Supply (depends on # of lamp modules)
- Hardware hanging kit (UV-4015)
- Safety glasses



Profusion Double Bank [2 lamp module] UV-4000DB



120/240V, 60W Power Supply UV-2023 (1-3 Profusions)



### Profusion LED UV-A attributes:

- Serialized Certificate of Conformance
- Tested & complies with Rolls-Royce RRES 90061 Requirements
- Tested & complies with ASTM E3022 Standard
- Meets Specifications ISO 3059
- Input voltage 100-240V AC
- Customized for your inspection area
- Module assembly required, instructions included
- IP68 Rated

### Directions For Use:

1. Drop
  2. Kick
  3. Use
- \*Note: Steps can be performed in any order!



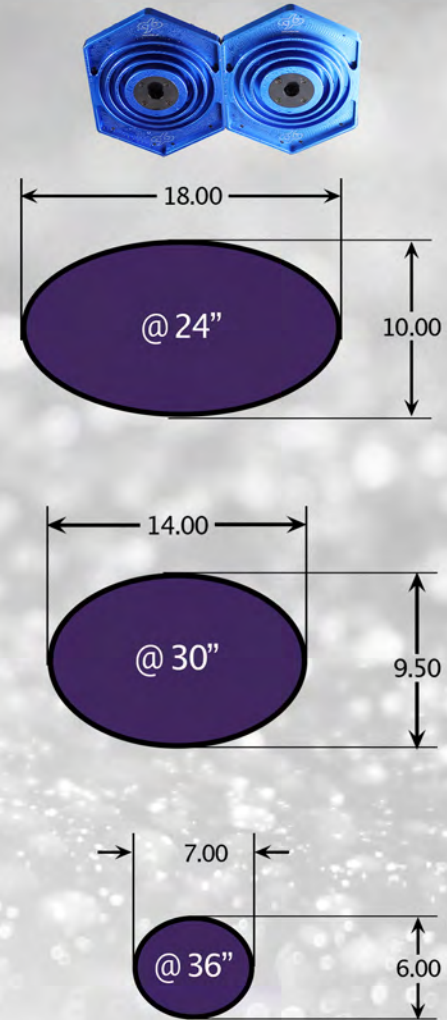
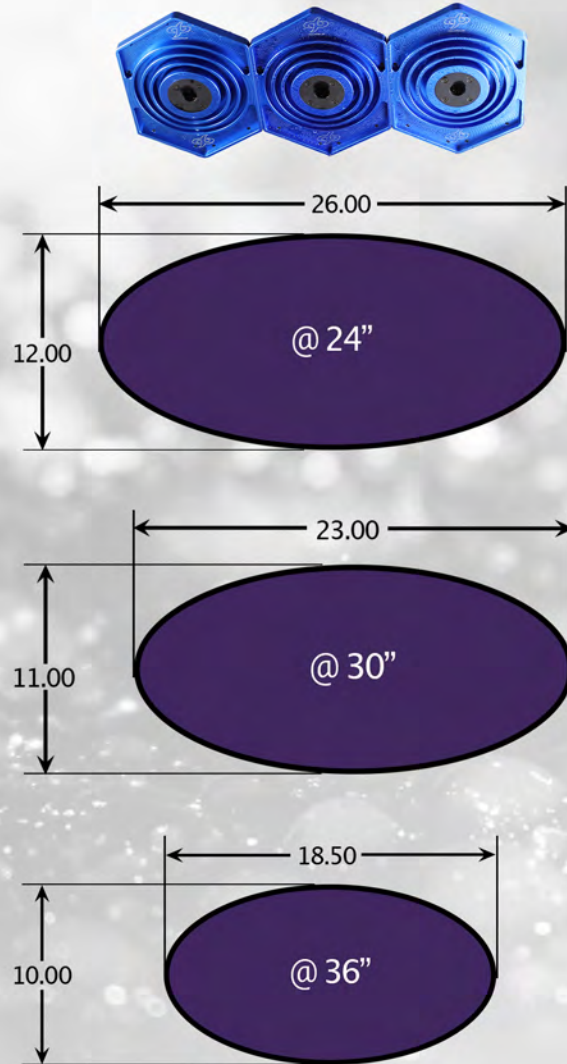


# Profusion LED UV-A Lamp Module Common Configurations

Coverage Area  
>1000  $\mu\text{W}/\text{cm}^2$

Triple Bank

Double Bank





# Profusion Single Lamp Module Characteristics

Performance Attributes	Parameters
Maximum Irradiance (at 15 in/38cm)	5000 $\mu\text{W}/\text{cm}^2$
Peak Wavelength	365 $\pm$ 5 nm
Irradiance at Peak Wavelength (at 15 in)	> 200 $\mu\text{W}/\text{cm}^2$
Typical Irradiated Area (profile at 15 in)	Circular Spot 10" Diameter > 1000 $\mu\text{W}/\text{cm}^2$ (347-382nm)
Emission Spectrum	
Full Width at Half Maximum (FWHM)	$\leq$ 15 nm
Longest Wavelength at Half Max (LWHM)	$\leq$ 377 nm
Full width at 10% Maximum	$\leq$ 30 nm
Excitation Irradiance (347-382 nm)	> 2500 $\mu\text{W}/\text{cm}^2$
Wavelength Drift (at 70° F ambient)	$\leq$ 3 nm
Working Distances	
ASTM E3022	Minimum WD $\leq$ 5 in
RRES 90061	Minimum WD = 15 in
	Maximum WD = 36 in
Typical Visible Emission	
ASTM E3022 range (400-760 nm)	$\leq$ 2 ft candles
RRES 90061 range (390-800 nm)	$\leq$ 20 lux at 15 in
	$\leq$ 5 lux at 36 in

Physical Attributes	Parameters
Operating Environment	32 - 115 ° F
Maximum Housing Temperature (at 70° F ambient)	104 ° F*
Lamp Cord Length	10 ft
Power Supply	Per order
Weight	3.08 lb
Power in	100-240V AC / 50 - 60Hz < 1.2A
Specification Compliance	ASTM E3022, RRES 90061, ISO 3059

\* Emission Spectrum measured at Stabilization Temperature



Weight of 1 Module: 3.08 lb.





# Accessories for the Profusion

Hardware Hanging Kit UV-4015

Profusion 12" Connection Wire Kit (Includes Joining Plate) UV-2030



Swivel Mount UV-4010



Switch Block UV-4200



Power Cord UV-2007



120/240V, 120W Power Supply UV-2031 (4-7 Profusions)







# Profusion XW

LED UV-A Lamp

Tested & Complies with



**ASTM E3022**  
STANDARD

Meets Specifications



**ISO 3059**



[relinc.com](http://relinc.com)



# Profusion XW LED UV-A Lamp

///// 2-Year Warranty /////

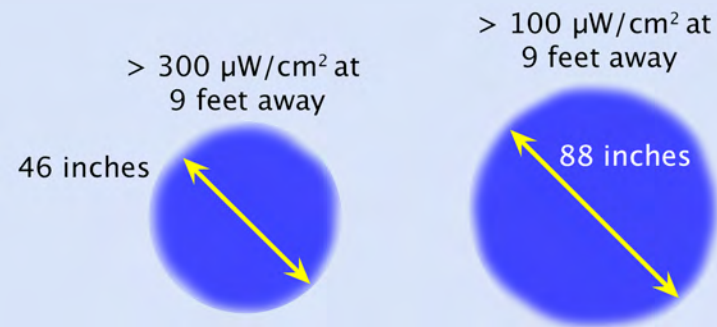
## UV-4700 includes:

- Glo-Black Profusion XW Lamp
- 120/240V, 120W Power Supply (UV-2031)
- Power Cord (UV-2007)
- Swivel Mount (UV-4010)



## Profusion XW Attributes:

- Waterproof - IP68 Rated
- 100% continuous duty at full output
- $\approx$  100 Watts per lamp
- Tested & complies with ASTM E3022 Standard
- Meets Specifications ISO 3059





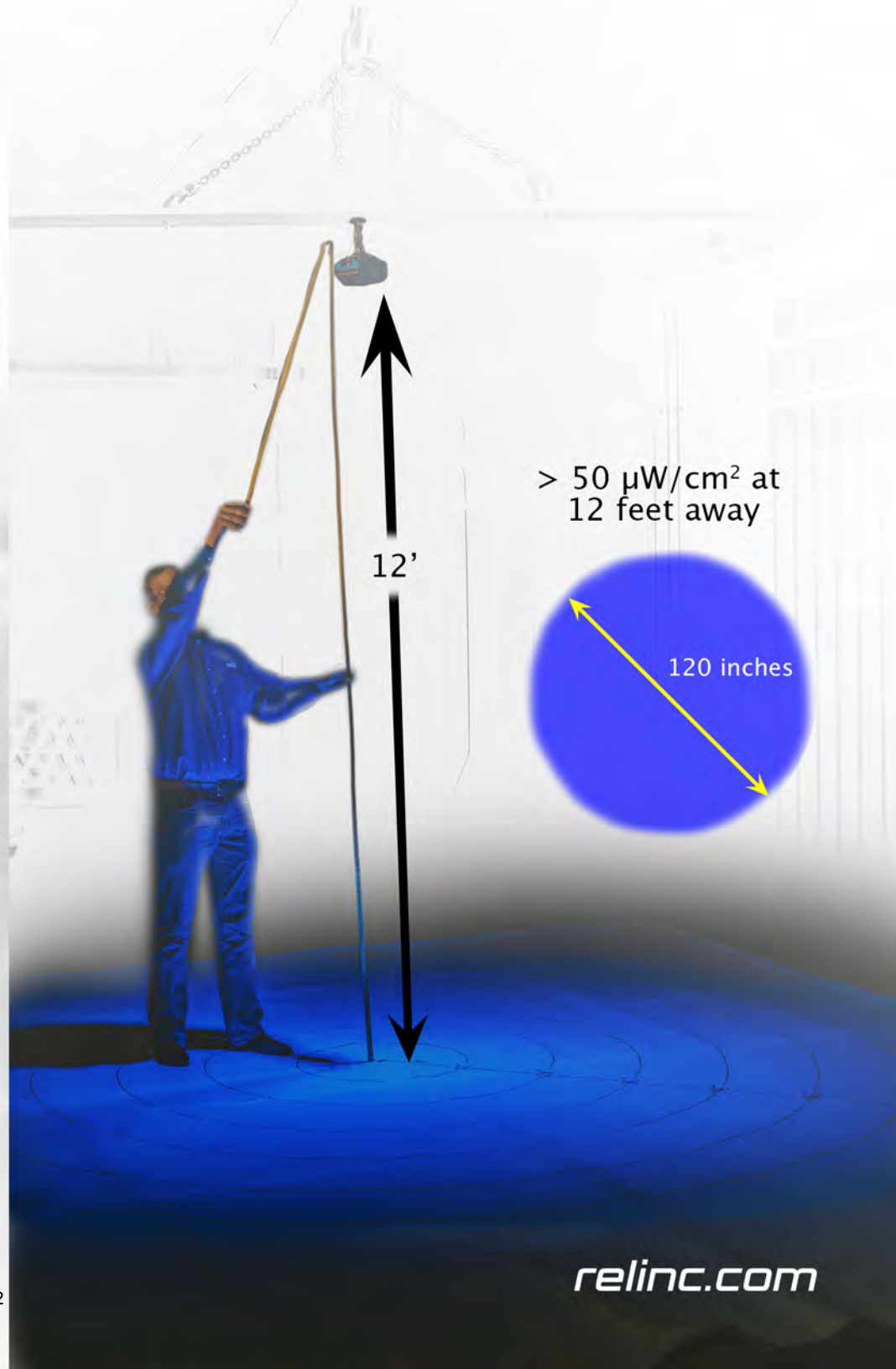
# Profusion XW Lamp Characteristics

<i>Performance Attributes</i>	<i>Parameters</i>
Maximum Irradiance (at 36 in/91cm)	5700 $\mu\text{W}/\text{cm}^2$
Peak Wavelength	365 $\pm$ 5nm
Emission Spectrum	
Full Width at Half Maximum (FWHM)	$\leq$ 15 nm
Longest Wavelength at Half Max (LWHM)	$\leq$ 377 nm
Full width at 10% Maximum	$\leq$ 30 nm
Excitation Irradiance at 36 in	$>$ 5000 $\mu\text{W}/\text{cm}^2$
Wavelength Drift (at 70 ° Fambient)	$\leq$ 1 nm
Typical Visible Emission	
range (400-760 nm)	$\leq$ 2 ft candles at 36 in
	$\leq$ 20 lux at 36 in

<i>Physical Attributes</i>	<i>Parameters</i>
Operating Environment	32-115° F
Maximum Housing Temperature (at 70° F ambient)	88 °F *
Lamp Cord Length	10' Standard
Power Supply	Included
Weight	5.8 lbs
Power in	100-240V AC / 50/60Hz
Specification Compliance	ISO 3059

\* Emission Spectrum measured at Stabilization Temperature

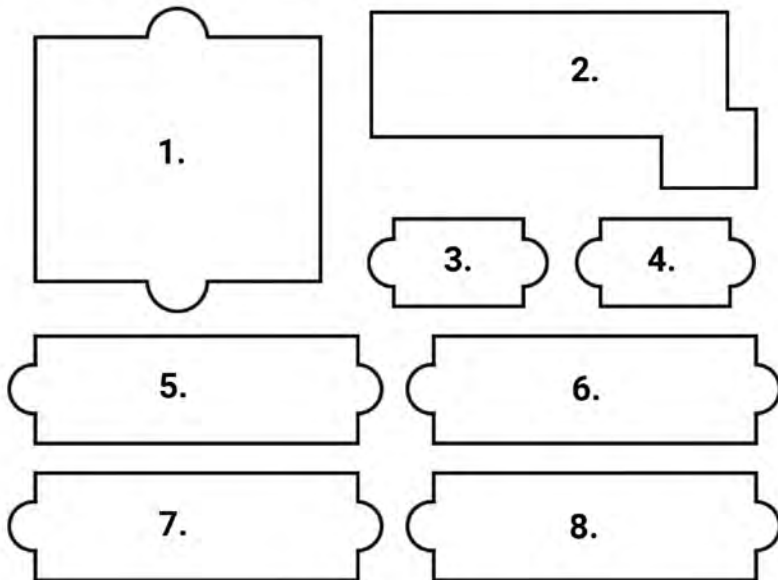
Weight of 1 lamp: 5.8 lb.





**FPI MOBILE TESTING  
NOMAD  
TYPE 1, METHOD C  
PART # 470-00000  
CAGE CODE: 5DLA1  
NSN: 6850-01-676-2205**

1. 120V CHARGER 470-00007
2. C4 NOMAD 470-UV-2400
3. 18V BATTERY 470-00008
4. 18V BATTERY 470-00008
5. 1 CAN ZL-27A PENETRANT 470-00006
6. 1 CAN ZP-9F DEVELOPER 470-00005
7. 1 CAN SKC-S CLEANER 470-00004
8. 1 CAN SKC-S CLEANER 470-00004



**FPI Mobile Testing Kit**

Part # 470-00000  
NSN 6850-01-676-2205

- C4 Nomad
- 120V Charger
- Two M18 2-Amp hr batteries
- 1 can penetrant
- 1 can developer
- 2 cans cleaner



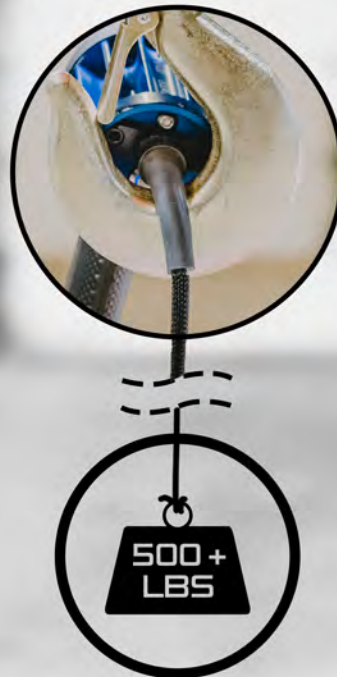
*"The only complete mobile testing kit available to the fleet."*



# Bolt on Power



lift point



Abrasion  
Resistant



Durable



Prevent  
Breakage





# REL Star Testing Panel

REL Star Testing Panels are Hexavalent Chromium free

REL Designed Green



Panel plating is designed to comply with RoHS, REACH, WEE, ELV, and Proposition 65.

REL Certified



REL Star Testing Panels meet the requirements as stated in ASTM E1417, MIL-STD-6866, TO 33B-1-1, NAVAIR 01-1A-16-1, and TM 1-1500-335-23. The REL Star Testing Panels have been manufactured and tested in accordance with the REL, Inc. procedure RWI-1105.



3x magnification

Twin Panels Shown



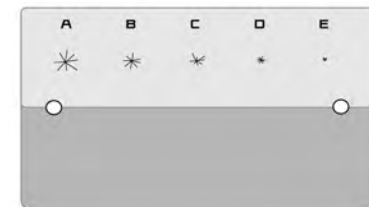
REL Star Testing Panel - Single  
[Part Number: 250-00104]

REL Star Testing Panel - Twin  
[Part Number: 250-00103]

Each REL Star Testing Panel includes documentation, protective case, and foam sleeve for panel.

## PENETRANT SYSTEM MONITORING PANEL DOCUMENTATION

SN# 80077198	A	B	C	D	E
Crack Position					
Photo of Defect					
Magnification Factor: 1 : 5.5					
Measured Size [inch]	0.183	0.142	0.081	0.050	0.030
Specification [inch]	0.180 - 0.250	0.125 - 0.171	0.075 - 0.093	0.046 - 0.062	0.015 - 0.031
Measured Size [mm]	4.65	3.61	2.06	1.27	0.76
Specification [mm]	4.57 - 6.35	3.18 - 4.34	1.91 - 2.36	1.17 - 1.57	0.38 - 0.79
Crack Depth	.0025" ± .0001"		63 µm ± 2.5µm		



## Documentation (see above image)

- REL Star Testing Panel and Documentation included:
1. Case w/ panel certification,
  2. Serialized crack size certification documents, and
  3. Five [5] pictures of the manufactured defects.







**RELENTLESS.  
INNOVATION.**

**REL**

*relinc.com*



**REL**



[relinc.com](http://relinc.com)