

TESTED TO COMPLY WITH



ASTM
E3022-18
Standard

SPECTRO-UV®

THE GLOBAL LEADER IN ULTRAVIOLET EQUIPMENT

PowerMAX 365 PM-8B

UV-A LED Panel Flood Lamp

Low visible light emission—
less than 0.5 foot-candle (2.2 lux)

Ideal for:



NDT
INSPECTION
BOOTHS



FLUORESCENT
PENETRANT AND
MAGNETIC PARTICLE
INSPECTION



WASH STATION
INSPECTION



SCREENING OF
FLUORESCENT
PARTICLES

ROCKER SWITCH

Easily switched between UV & White Light

MOUNTABLE

For overhead inspection or in-line applications

ELECTRONIC INTENSITY CONTROL

Capable of adjusting light output down to
1,000 $\mu\text{W}/\text{cm}^2$



LONG LASTING LEDs

ALUMINUM HOUSING

Built for use in the most rugged environments

INTEGRAL UV-A PASS FILTERS

Reduce visible wavelengths

MODEL	NOMINAL STEADY-STATE UV-A INTENSITY WITH FILTER at 15 in (38 cm) ①	UV-A COVERAGE AREA at 15 in (38 cm) at minimum 1,000 $\mu\text{W}/\text{cm}^2$	WHITE LIGHT INTENSITY	VISIBLE LIGHT MEASUREMENT
PM-8B	6,500 $\mu\text{W}/\text{cm}^2$	10 in X 16in	>325 foot-candle (>3500 Lux)	<1 foot-candle (<10 lux)

① UV-A intensity reading taken with the Spectro-UV® AccuMAX™ Series meter, and is factory set to the value shown.

PM-8B

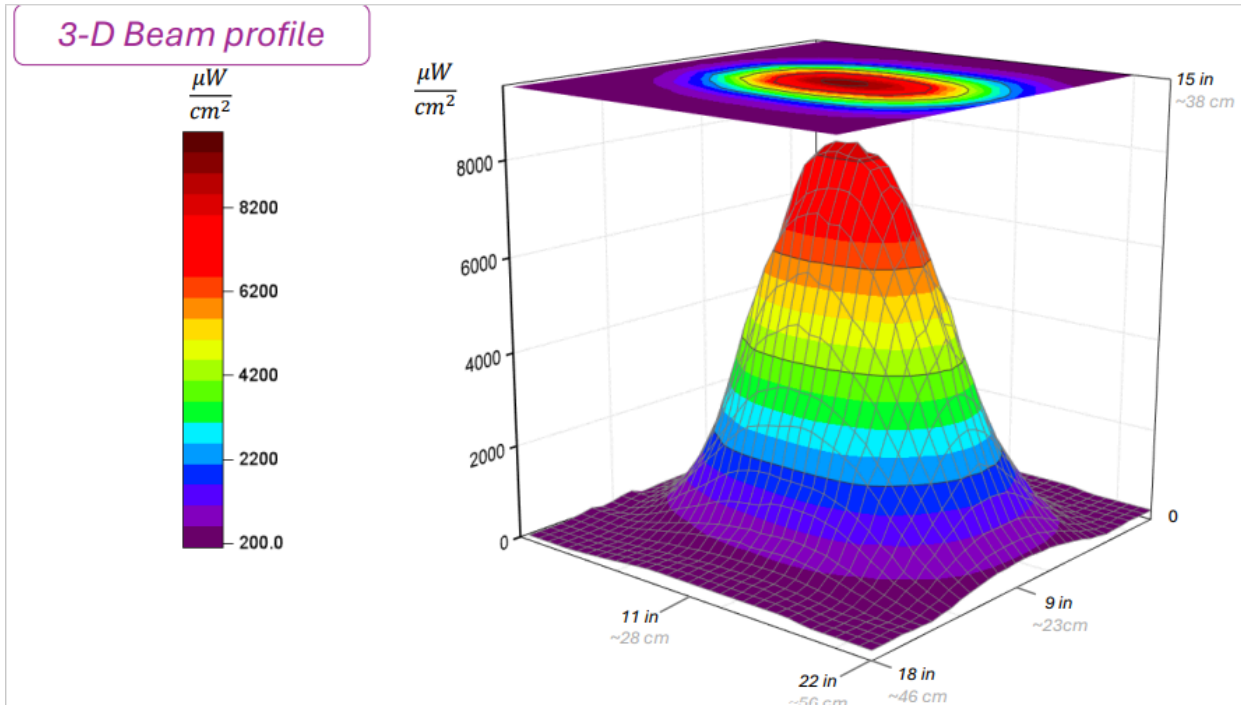
- Light Source: 8 UV-A LED'S & 2 White LED'S
- Lamp Style: Panel Flood Lamp
- Length: 10 in (25.4 cm)
- Width: 8 in (20.32 cm)
- Height: 5 in (12.7 cm)
- Weight: 8.9 Lb (4 Kg)
- Intensity Control: From 15% - 100%
- Power Requirements: 100V - 120V, 50-60 Hz



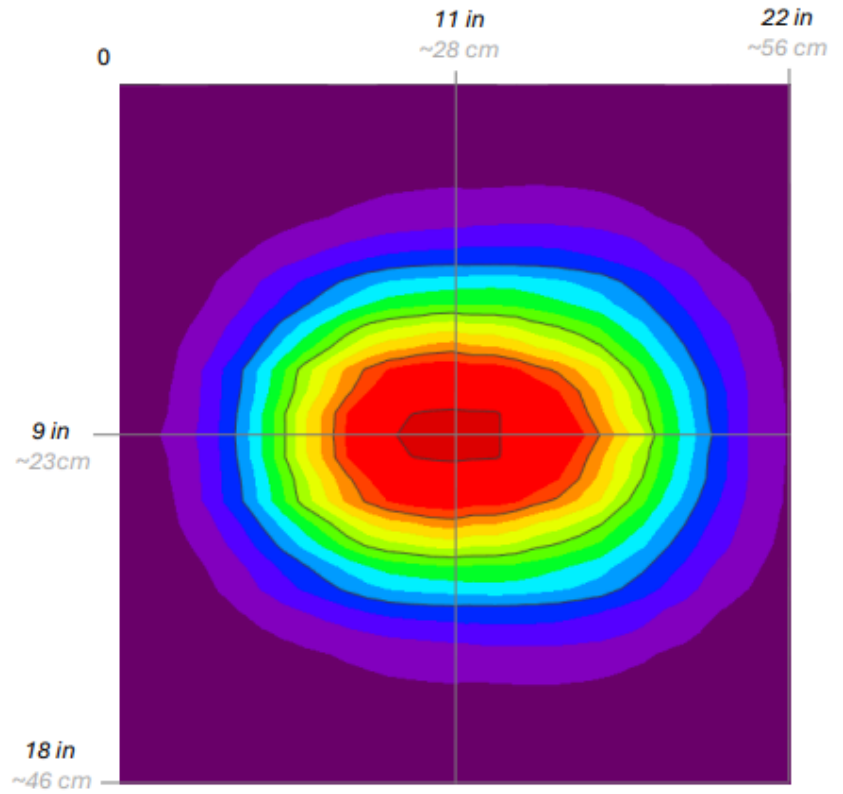
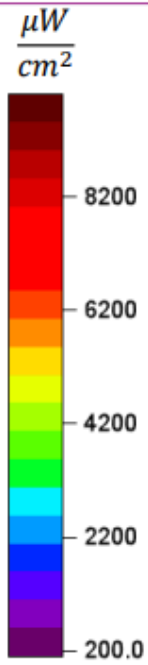
PowerMAX 365 UV-A LED Panel Flood Lamp Kit
Comes complete with PowerMAX 365 UV-A LED Panel Flood Lamp, Power Cord, Chain and Hooks.

UV-A Beam Profiles

Surface Contour Profile at 15 in (38 cm)



Coverage area



Distributed by:



800-900-9097
info@NDTUnlimited.com
www.NDTUnlimited.com

SPECTRO-UV[®]
THE GLOBAL LEADER IN ULTRAVIOLET EQUIPMENT

www.Spectro-UV.com 4 Dubon Ct.,
Farmingdale, NY 11735 866-230-
7305